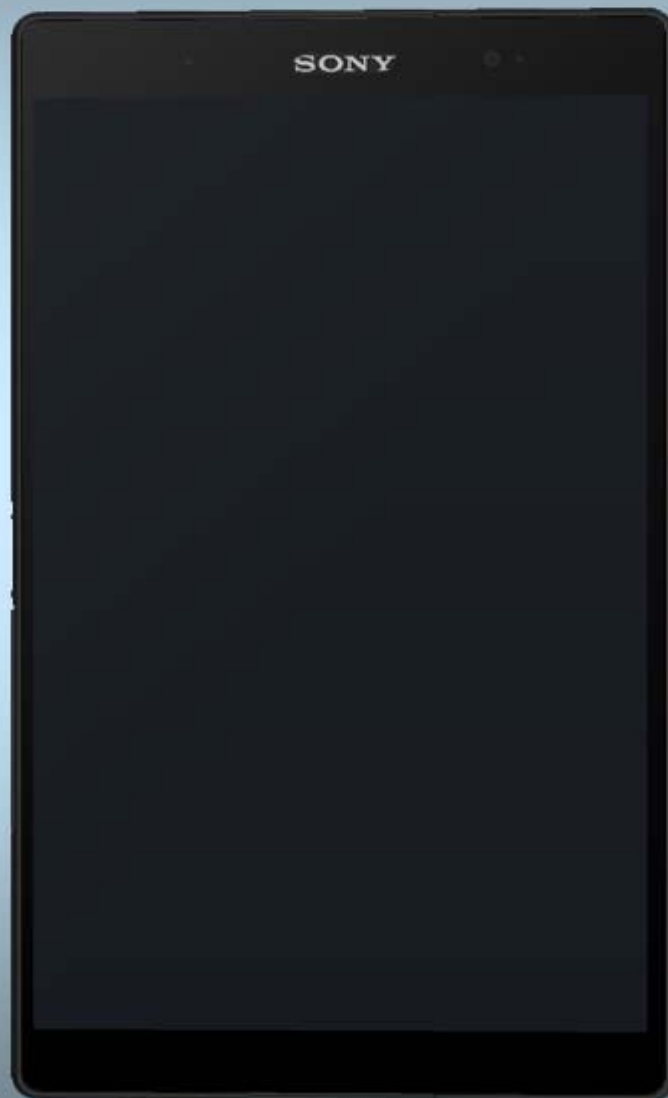


# Component Replacement

- electrical -



*Xperia™ Z3 Tablet Compact*  
**SGP611, SGP612, SGP621, SGP641**

## CONTENTS

1	Replaceable Components .....	3
2	Component Placing.....	5
3	Additional Repair info .....	6
4	Revision History .....	15

*For general information about electrical repair related issues, refer to  
1220-1336: Generic Repair Manual - electrical*

*Test after electrical replacement: refer to 1273-1772 Mechanical Test Instruction*

*All Electrical components are RLC level B, Reversed Logistic Classification, See the Spare Part  
Handling chapter in Mechanical/Generic Repair Manual 1220-1333.*

*Do not remove shield can lids (Heat pasta are added and RF performance will be damaged)*

# 1 Replaceable Components

## EXPLANATION OF ABBREVIATIONS USED IN THE COLUMN 'COMMENTS' BELOW

### **COMPONENT LOCATION**

**P** = Primary side

**S** = Secondary side

### **REPAIR METHOD**

**HA** = Hot Air (removal & mounting)

**ST** = Soldering Tool (removal & mounting)

**HA/ST** = Hot Air for removal - Soldering Tool for mounting

**BGA** = BGA Station

**BH** = Bottom Heater

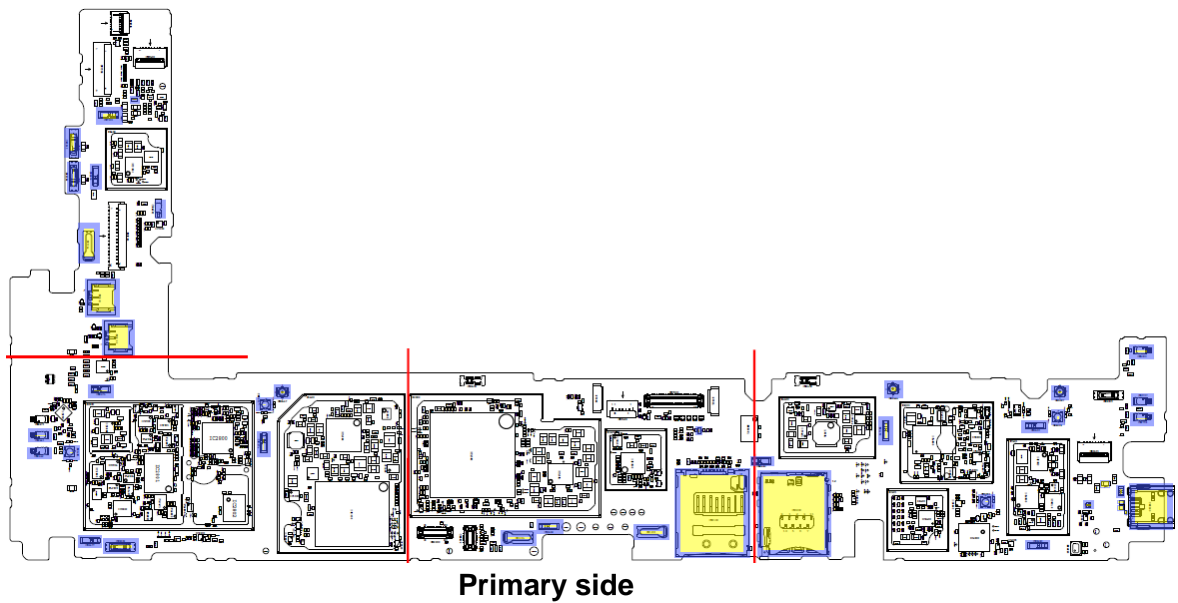
### **ADDITIONAL INFORMATION**

⇒1 (2,3,4, etc.) = Proceed to 'Additional Repair Info' for further instructions in the indicated section(s).

Position	Component	Part no.	Comments
CN1300	Conn WtB Receptacle 3p	1277-3464	P HA+BH ⇒1
CN1302	Conn WtB Receptacle 3p	1277-3464	P HA+BH ⇒1
CN1304	Conn Leaf Spring Plug 1p	1289-4982	P HA+BH ⇒2
CN1305	Conn Leaf Spring Plug 1p	1289-4982	P HA+BH ⇒2
CN2200	Conn USB micro B Receptacle 5p	1277-3470	P HA+BH or BGA ⇒3
CN2653	Conn Coax Receptacle 1p	1288-3122	P HA+BH ⇒4
CN2655	Conn Coax Receptacle 1p	1288-3122	P HA+BH ⇒5
CN2656	Conn Coax Receptacle 1p	1261-3585	S HA+BH ⇒6
CN2657	Conn Coax Receptacle 1p	1261-3585	S HA+BH ⇒7
CN2661	Conn Leaf Spring Plug 1p Antenna/Groundi	1238-5880	S HA+BH ⇒8
CN2662	Conn Leaf Spring Plug 1p Antenna/Groundi	1238-5880	S HA+BH ⇒8
CN2674	Conn Leaf Spring Plug 1p	1289-4802	S HA+BH ⇒9
CN2675	Conn Leaf Spring Plug 1p	1289-4802	S HA+BH ⇒10
CN2677	Conn Leaf Spring Plug 1p	1289-4802	P HA+BH ⇒11
CN2678	Conn Leaf Spring Plug 1p	1289-4802	P HA+BH ⇒11
CN2679	Conn Leaf Spring Plug 1p	1289-4802	P HA+BH ⇒12
CN2680	Conn Leaf Spring Plug 1p	1289-4802	P HA+BH ⇒13
CN2681	Conn Leaf Spring Plug 1p	1289-4802	P HA+BH ⇒13
CN2682	Conn Leaf Spring Plug 1p	1289-4802	P HA+BH ⇒14
CN2683	Conn Leaf Spring Plug 1p	1289-4802	P HA+BH ⇒15
CN2693	Conn Leaf Spring Plug 1p	1289-4802	P HA+BH ⇒9
CN2707	Conn Leaf Spring Plug 1p Antenna/Groundi	1238-5880	P HA+BH ⇒16
CN2708	Conn Leaf Spring Plug 1p Antenna/Groundi	1238-5880	P HA+BH ⇒16
CN3502	Conn Leaf Spring Plug 1p	1289-4882	P HA+BH ⇒17
CN3503	Conn Leaf Spring Plug 1p	1289-4882	P HA+BH ⇒17
CN4000	Card Conn SIM Nano	1278-7930	P HA+BH or BGA ⇒18
CN4100	Card Conn Micro SD	1281-9124	P HA+BH or BGA ⇒19
CN7301	Conn Leaf Spring Plug 1p	1289-4802	P HA+BH ⇒20
CN8000	Conn Leaf Spring Plug 1p Antenna/Groundi	1238-5880	P HA+BH ⇒21
CN8003	Conn Coax Receptacle 1p	1288-3122	P HA+BH ⇒22
CN8007	Conn Coax Receptacle 1p	1261-3585	P HA+BH ⇒23
CN8008	Conn Coax Receptacle 1p	1288-3122	P HA+BH ⇒24
CN8402	Conn Leaf Spring Plug 1p	1289-4882	P HA+BH ⇒25
D2200	Diode Protection 5.0 V SOD-923	1272-0665	P HA+BH ⇒26
D2201	Diode Protection 5.0 V SOD-923	1272-0665	P HA+BH ⇒27
FL2200	Filter 100.0 MHz 0,85*0,65*0,45	1256-1194	P HA+BH ⇒28
FL2201	Diode Protection 15.0 V 0.6x0.3x0.33 Bi-	1256-4313	P HA+BH ⇒29
FL2202	Filter Ceramic Lo-pass 50.0 MHz 1608	1269-0526	P HA+BH ⇒30
R2200	Resistor 0, Ohm +/-50m 63 mW K0603	1000-0257	P HA+BH ⇒31
UC5102	Fuse 0.25A 1.0*0.5mm	1265-7224	P HA+BH ⇒32
UC5304	Fuse 0.25A 1.0*0.5mm	1265-7224	P HA+BH ⇒33

## 2 Component Placing

To access the Component Placing document, double-click the icon below.  
Applicable for on-screen viewing only – icon not shown on hard-copies.



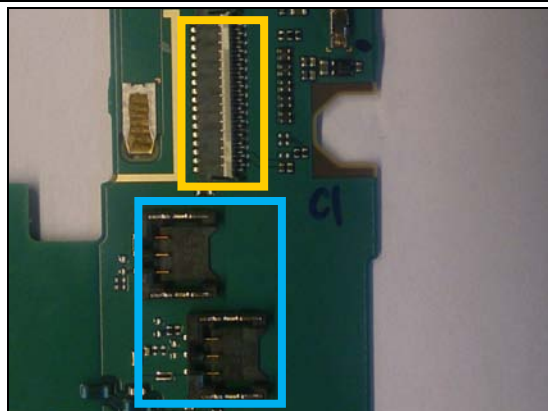
### 3 Additional Repair info

1

CN1300, CN1302

**Replace if mechanical damaged. (Phone dead or power off)**

**Protect the BtB connector with capton tape!**

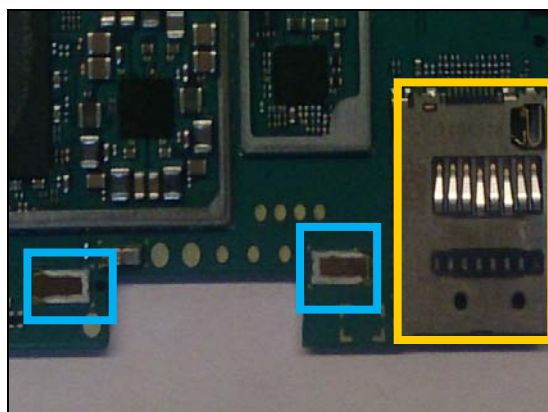


2

CN1304, CN1305

**Replace if mechanical damaged. (Magnet charger not working)**

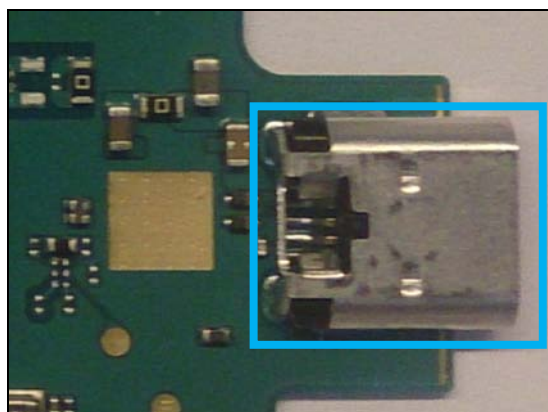
**Protect the SD connector with capton tape!**



3

CN2200

**Replace if mechanical damaged (USB charger or data transfer not working)**

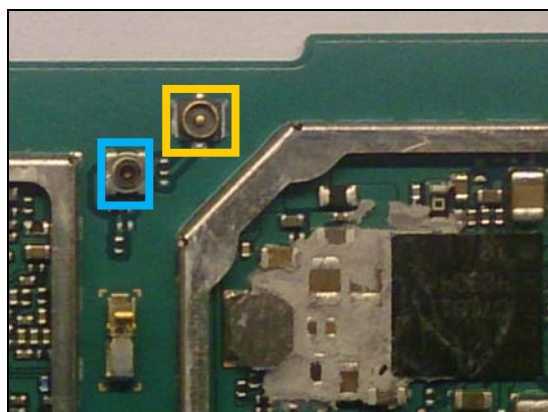


4

CN2653

**Replace if open circuit 1-3 (bad Network secondary antenna)**

**Protect the RF connector with capton tape!**



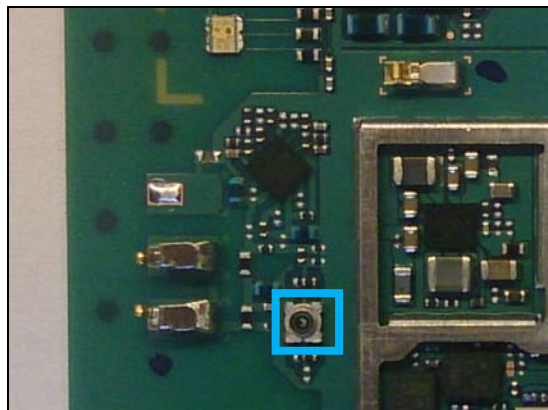


## Repair Actions: Additional Repair Info

5

CN2655

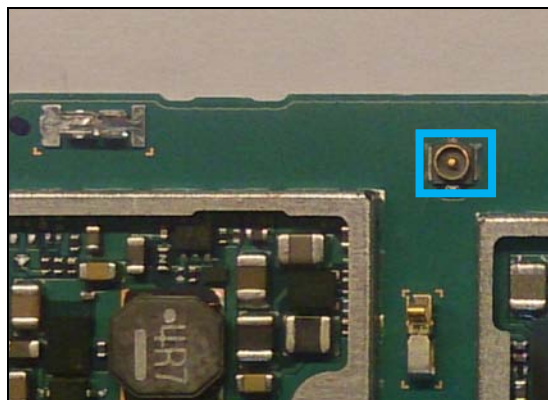
**Replace if open circuit 1-3 (bad Network main antenna)**



6

CN2656

**Replace if mechanical damaged (bad Network secondary antenna)**

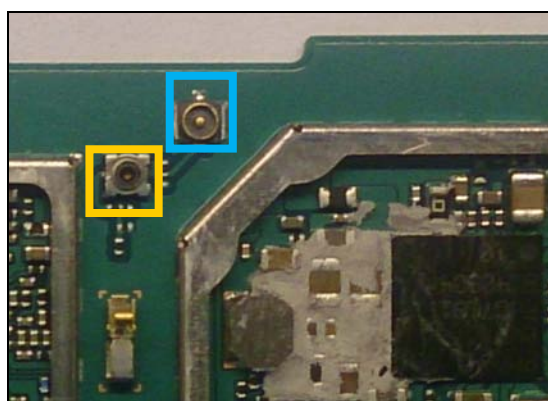


7

CN2657

**Replace if mechanical damaged (No or bad network, secondary antenna)**

**Protect the RF connector with capton tape!**

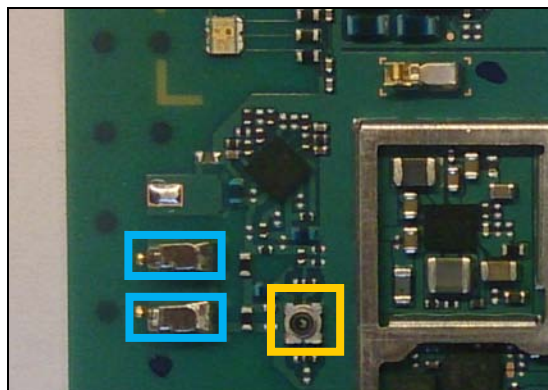


8

CN2661, CN2662

**Replace if mechanical damaged (No or bad network, main antenna)**

**Protect the RF connector with capton tape!**

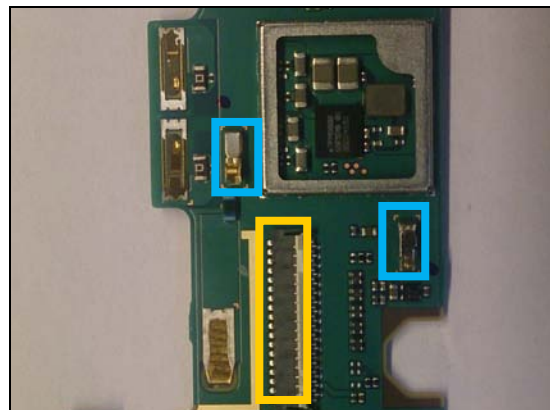


## Repair Actions: Additional Repair Info

9

CN2674, CN2693

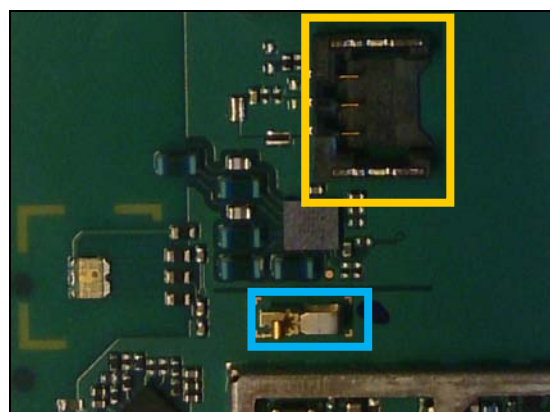
*Replace if mechanical damaged (Grounding Pin, LCD)*  
*Protect the BtB connector with capton tape!*



10

CN2675

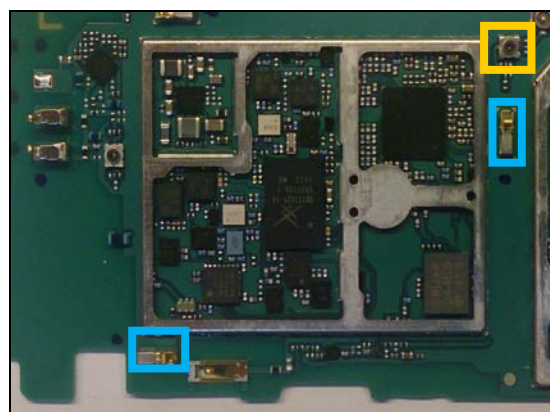
*Replace if mechanical damaged (Grounding Pin, LCD)*  
*Protect the Battery connector with capton tape!*



11

CN2677, CN2678

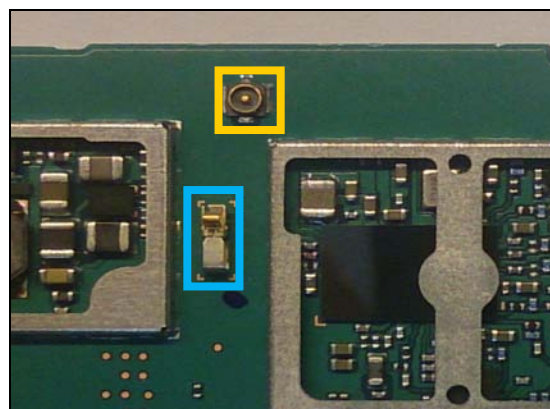
*Replace if mechanical damaged (Grounding Pin, LCD)*  
*Protect the RF connector with capton tape!*



12

CN2679

*Replace if mechanical damaged (Grounding Pin, LCD)*  
*Protect the RF connector with capton tape!*



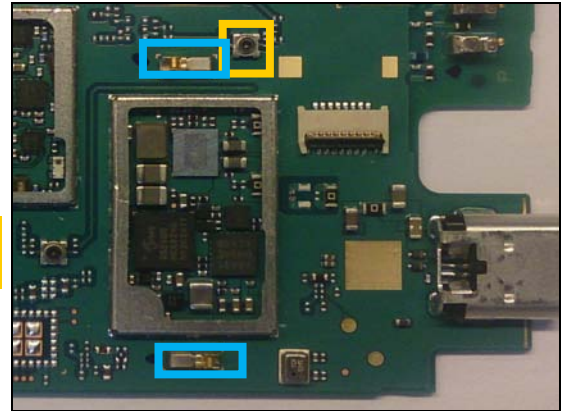


## Repair Actions: Additional Repair Info

**13**

**CN2680, CN2681**

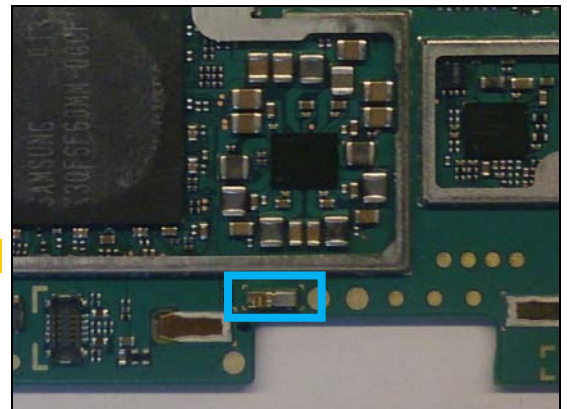
*Replace if mechanical damaged (Grounding Pin, LCD)  
Protect the RF connector with capton tape!*



**14**

**CN2682**

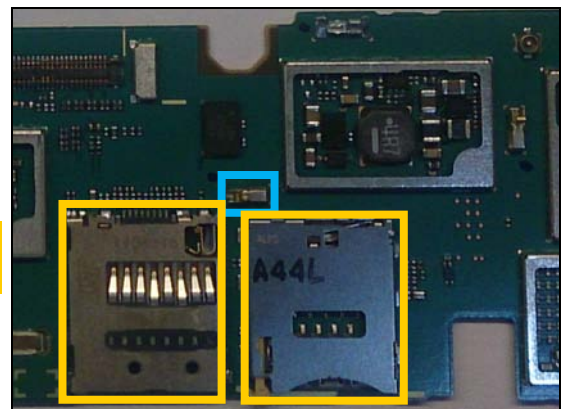
*Replace if mechanical damaged (Grounding Pin, LCD)*



**15**

**CN2683**

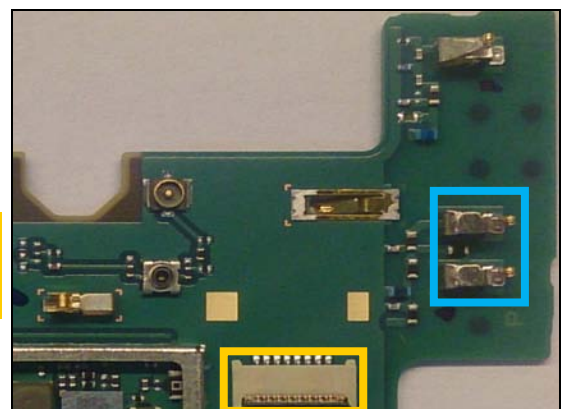
*Replace if mechanical damaged (Grounding Pin, LCD)  
Protect the SD and SIM connectors with capton tape!*



**16**

**CN2707, CN2708**

*Replace if mechanical damaged (No or bad network,  
secondary antenna)  
Protect the BtB connector with capton tape!*

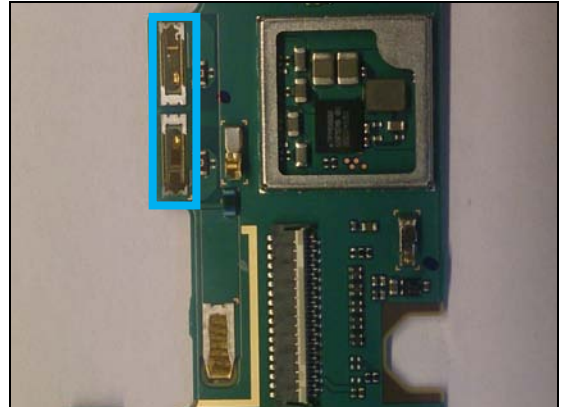


## Repair Actions: Additional Repair Info

**17**

**CN3500, CN3501**

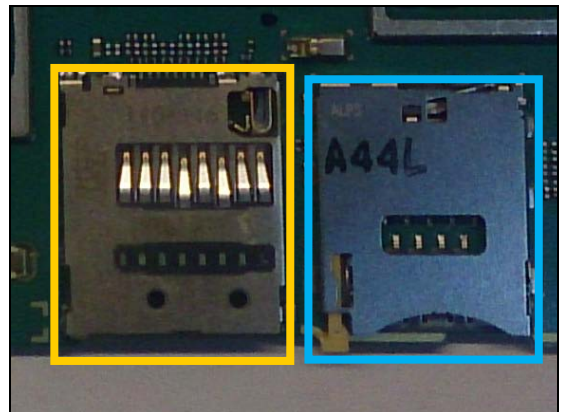
*Replace if mechanical damaged (Left / Top Speaker not working)*



**18**

**CN4000**

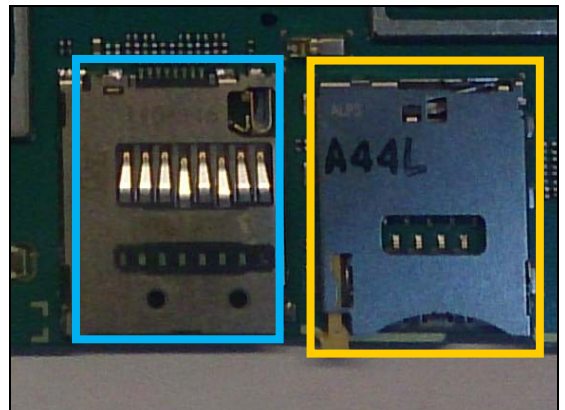
*Replace if mechanical damaged (No network, restart, No SIM card inserted, NFC SIM problem, reset problem)*  
*Protect the SD connector with capton tape!*



**19**

**CN4100**

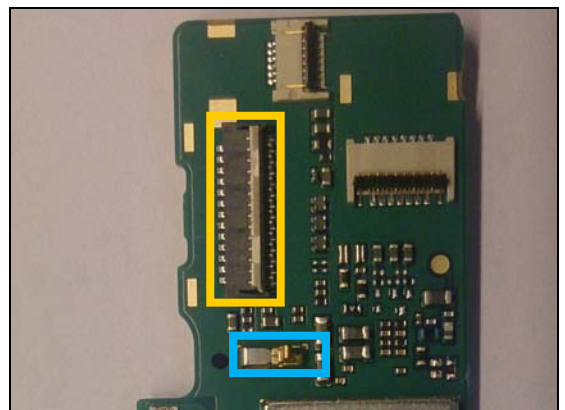
*Replace if mechanical damaged (No SD card)*  
*Protect the SIM connector with capton tape!*



**20**

**CN7301**

*Replace if mechanical damaged (Grounding Pin, Camera shield)*  
*Protect the BtB connector with capton tape!*

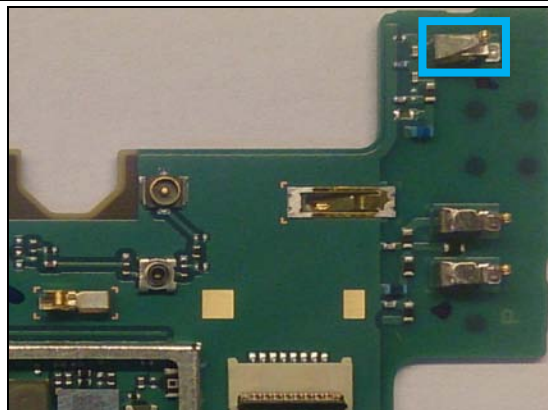


## Repair Actions: Additional Repair Info

**21**

**CN8000**

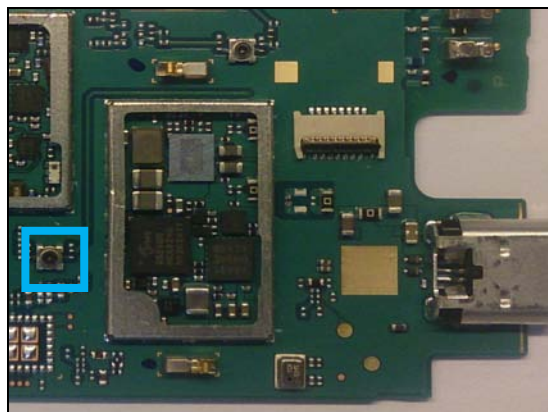
**Replace if mechanical damaged (No or bad WLAN / BT Core 0)**



**22**

**CN8003**

**Replace if open circuit 1-3 (No or bad WLAN / BT Core 0)**

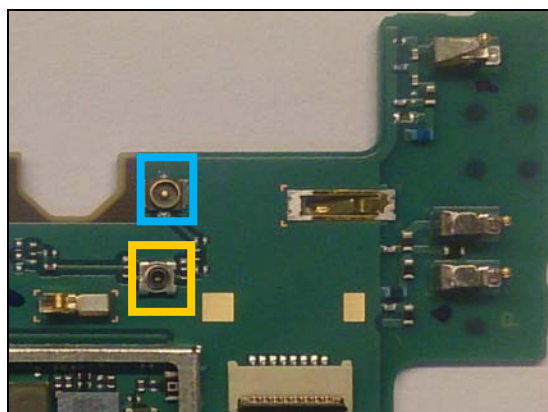


**23**

**CN8007**

**Replace if mechanical damaged (No or bad WLAN / BT Core 1)**

**Protect the RF connectors with capton tape!**

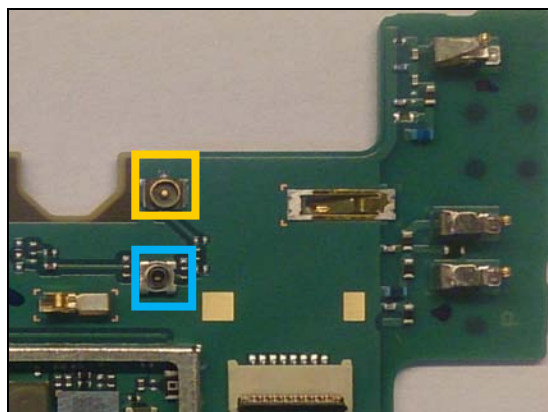


**24**

**CN8008**

**Replace if open circuit 1-3 (No or bad WLAN / BT Core1)**

**Protect the RF connectors with capton tape!**



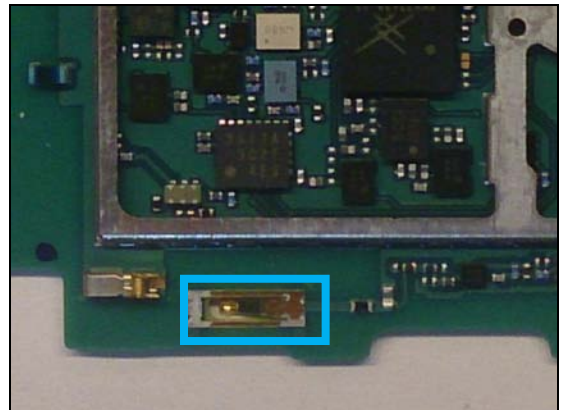


## Repair Actions: Additional Repair Info

**25**

**CN8402**

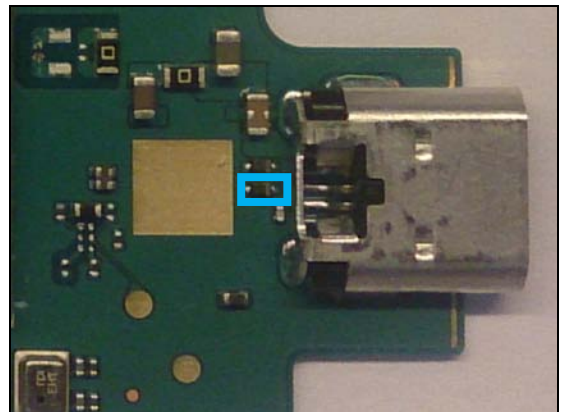
**Replace if mechanical damaged (No or bad GPS)**



**26**

**D2200**

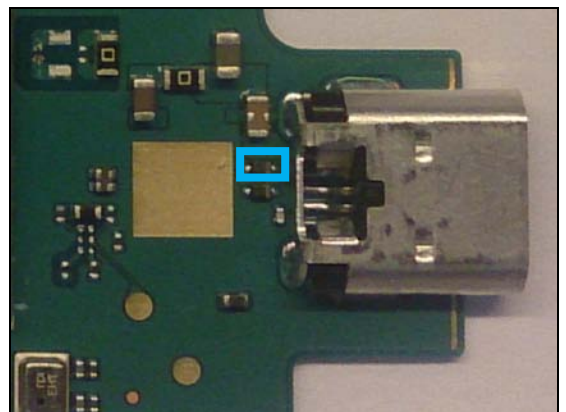
**Replace if short circuit (USB charger not working )**



**27**

**D2201**

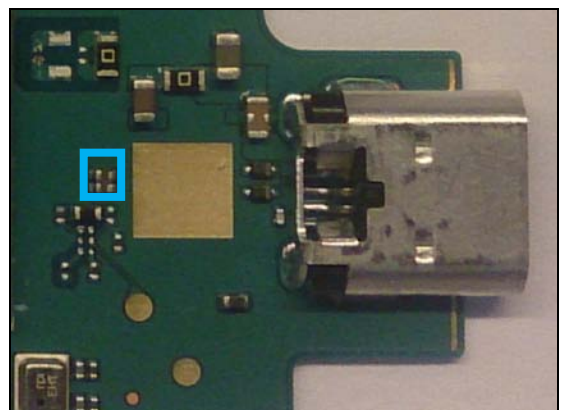
**Replace if short circuit (USB charger not working)**



**28**

**FL2200**

**Replace if open circuit 1-2 or 3-4 (USB charger not working)**

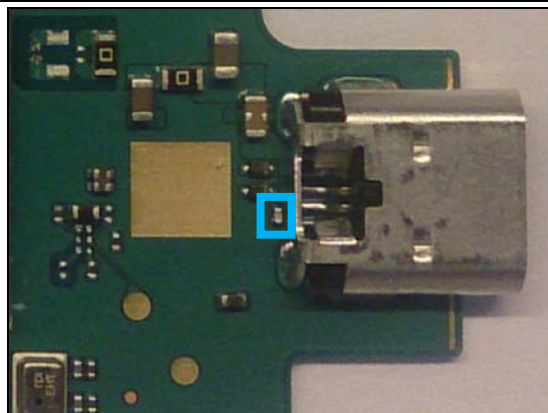


## Repair Actions: Additional Repair Info

**29**

FL2201

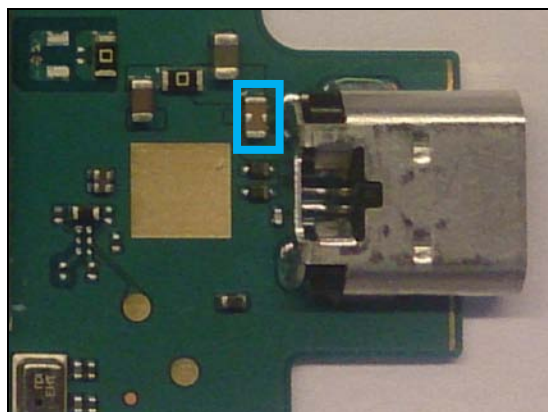
**Replace if open circuit (USB charger not working)**



**30**

FL2202

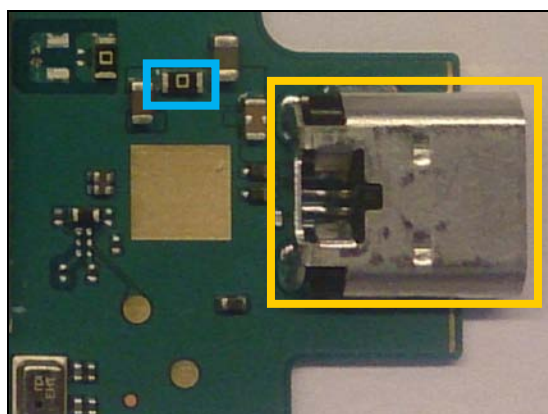
**Replace if open circuit 1-3 (USB charger not working)**



**31**

R2200

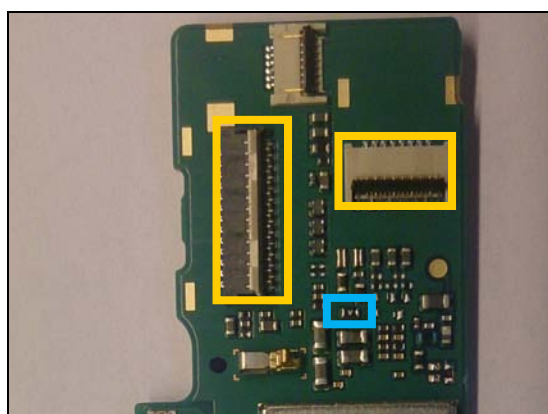
**Replace if open circuit. ( No USB charging)  
Protect the USB connector with capton tape!**



**32**

UC5102

**Replace if open circuit. (Vibrator not working)  
Protect the BtB connectors with capton tape!**



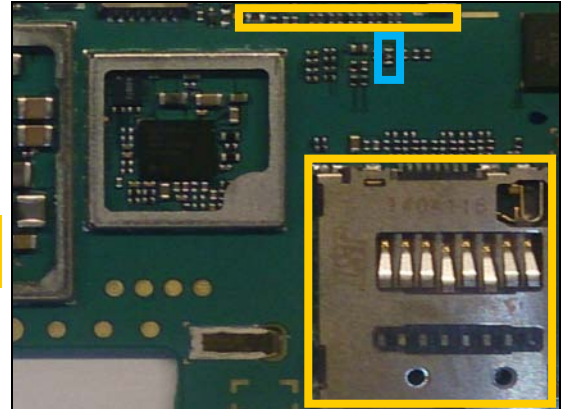
## Repair Actions: Additional Repair Info

**33**

**UC5304**

***Replace if open circuit. (Touch not working)***

***Protect the SD and BtB connectors with capton tape!***





## 4 Revision History

Rev.	Date	Changes / Comments
1	2014-10-15	Initial release
2	2015-03-24	Added components D2200, D2201, FL2200, FL2201 and FL2202